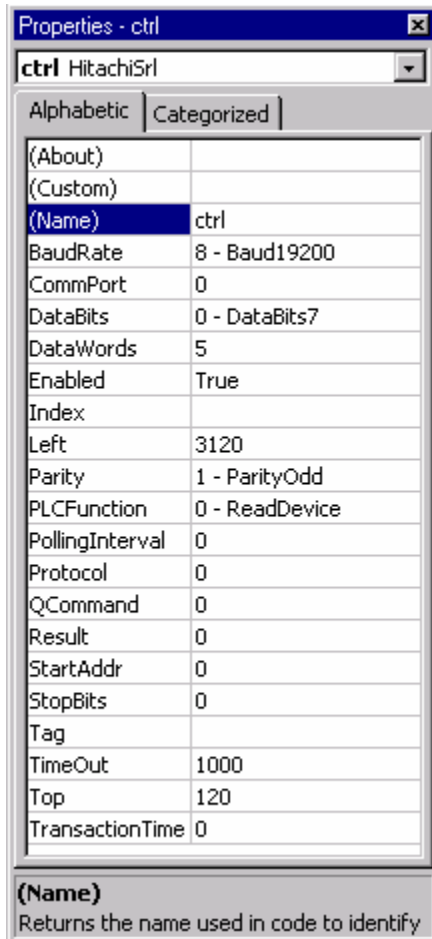


## Parijat ActiveX/32 for Hitachi S10/2 $\alpha$ PLC's Serial Master



### PCI-HITS10-Mser-CTX

Developed using state of the art Microsoft MFC4 technology for enhanced throughput and low overhead, Parijat's PLC communication 32-bit OLE custom controls (ActiveX/OCX), acquires/sends data from or to Hitachi S10/2 $\alpha$  PLC family products via the serial port. Read or write any of PLC data type. Q commands are also supported. Manipulate properties using our custom property sheets for utmost user-friendliness at design time. Rapid exception processing is available with our CompareInfo method, and auto polling interval may be set or control polling through your code for optimum performance. ActiveX/OCX's are very fast and also do not require significant Windows resources as DDE drivers or servers do.

**Methods:** Refresh PortOpen CompareInfo

**Events:** Outcome (fires when communication transaction completes)

Throughput: Reads 100 consecutive words in 490 msec @ 19.2k

### **This product works with:**

**Microsoft Visual Basic, Visual C++/J++ , Office97, Foxpro95 or any other OLE container.**

Related VBX Products:

### **Features:**

- No software protection keys or disks.
- Complete context-sensitive help & built-in manual.
- Works in Windows 95 and Windows NT.

*We also develop custom Windows products and applications with PLC's, MS Visual Basic, as well. We can also develop any ActiveX that you may need developed for a specific purpose. We also have an GUI MMI software (Visual Process) written in VB which provides basic SCADA monitoring, alarming, trending, reporting. With Visual Process, any CAD drawings, manuals, vendor data sheets, instrument spec sheets, instrument calibration sheets or any other documentation associated with control systems may also be integrated with the MMI/SCADA system to help attain the ISO9000 certification!*

10/97