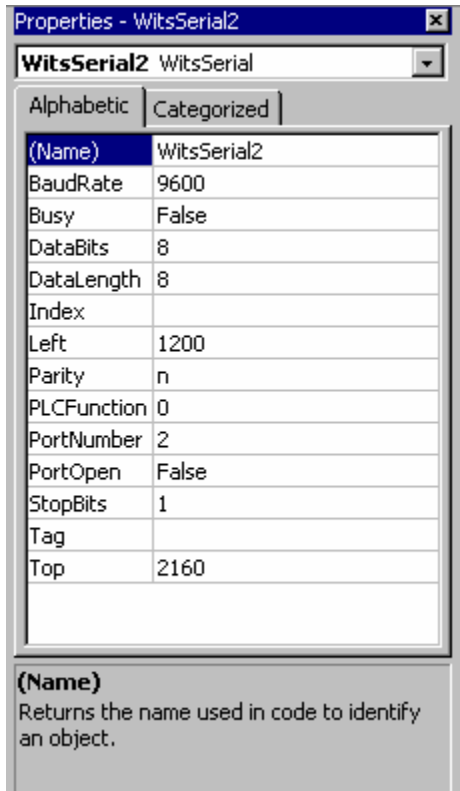


Parijat ActiveX/32 for WITS



PCI-WITS-ACTX

Developed using state of the art Microsoft technology for enhanced throughput and low overhead, Parijat's communication 32-bit ActiveX custom controls, acquires data via Comport from a Wits device. The data from the field devices is available as a 2 dimensioned array. Manipulate properties using our custom property sheets for utmost user-friendliness at design time ActiveX's are very fast and also do not require significant Windows resources

Events: Outcome (fires when communication transaction completes)

This product works with:

Microsoft Visual Basic, Visual C++/J++ , Office97, Foxpro95 or any other OLE container.

Features:

- Complete context-sensitive help & built-in manual.

We also develop custom Windows products and applications with PLC's, MS Visual Basic, as well. We can also develop any ActiveX that you may need developed for a specific purpose. We also have an GUI MMI software(Visual Process) written in VB which provides basic SCADA monitoring, alarming, trending, reporting. With Visual Process, any CAD drawings, manuals, vendor data sheets, instrument spec sheets, instrument calibration sheets or any other documentation associated with control systems may also be integrated with the MMI/SCADA system to help attain the ISO9000 certification!

12/ 97