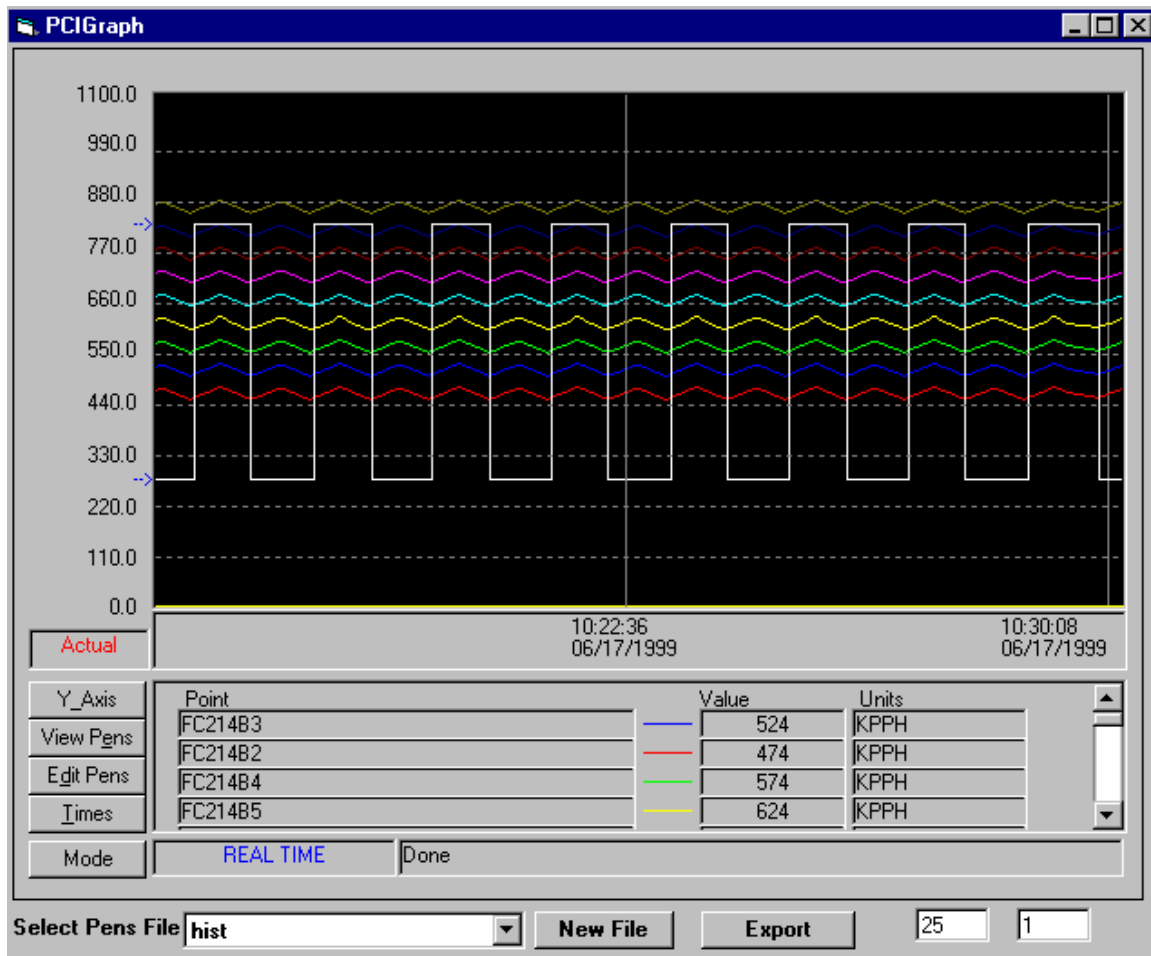


Parijat Historian for Desktop



Parijat Historian allows view of real time, storage and retrieval of historical process data from field devices. Retrieve & view data in a graphical trend form from any start time to end time. The graph displays data for up to 16 points simultaneously. Historian & current time data extraction and reporting to Microsoft Excel is available.

Features/Benefits

- Both real time trend graph and Historian. Smooth transition between the two modes.
- High speed diagnostic mode, whereby, it permits the user to review data stored prior to change of state of certain event(s) of significance.
- Works as Modbus master or slave via serial com port or ethernet TCP/IP. The slave mode permits the Parijat Historian to work with the legacy DCS or other systems.
- Client/server and special customised versions may be ceated.
- May be seamlessly integrated with sophisticated HMI applications.
- Other industrial protocols can be supported.
- Based on the Microsoft's ActiveX, COM, DNA technologies.